

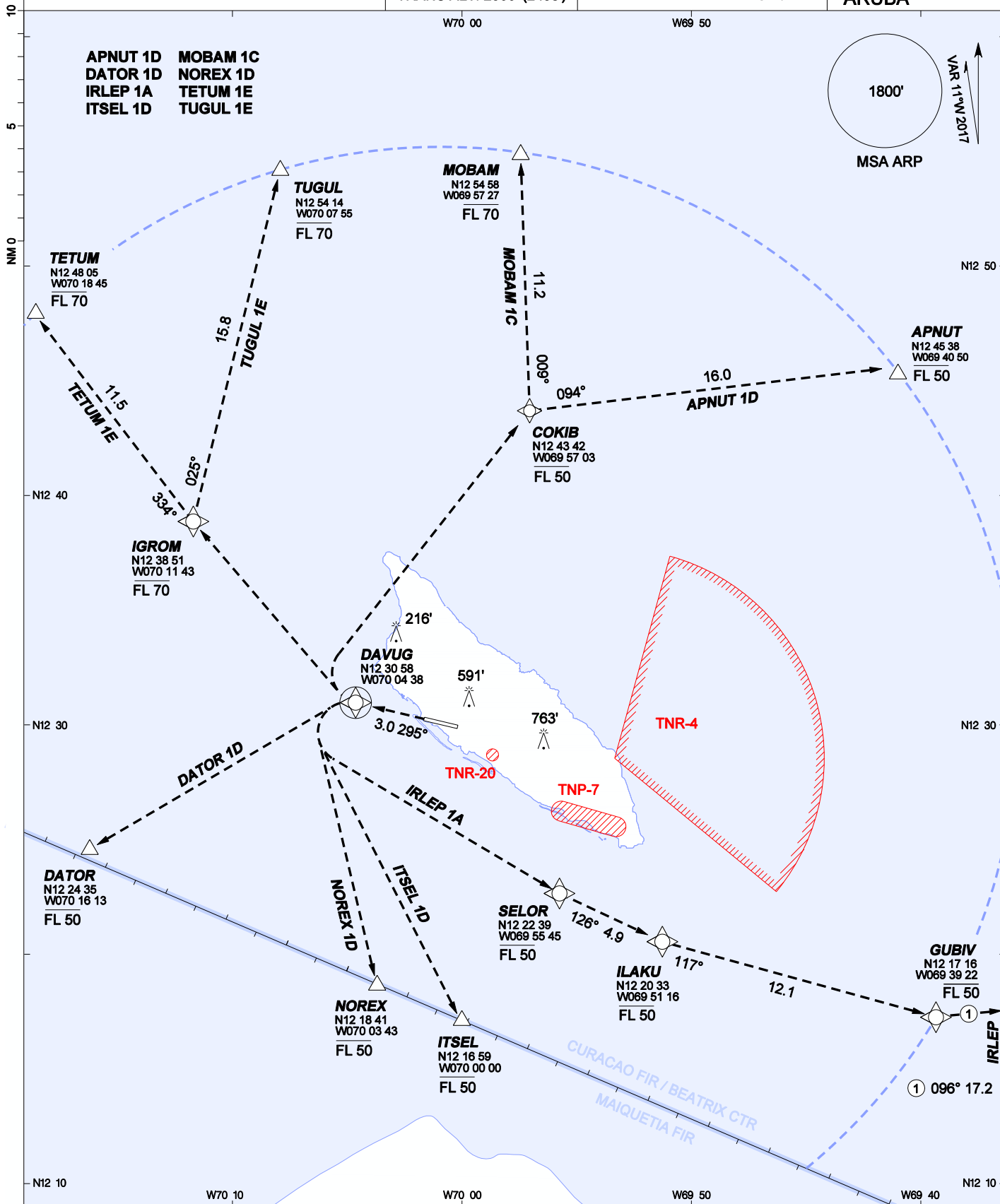
AIP DUTCH CARIBBEAN

RNAV (GNSS) DEPARTURES RWY 29
INSTRUMENT - ICAO

AD ELEVATION: 62'
TRANS LEVEL: FL 40
TRANS ALT: 2500' (2438')

BEATRIX:
APP/TWR 120.9 GND 118.0
APRON 121.6 ATIS 132.1

REINA BEATRIX
INT'L (TNCA)
ARUBA



CHANGES: Mag var date.

1. RNP-1 or RNAV-1 required.
2. Climb on runway course 295° to DAVUG. Follow assigned route.

- TNP-7 ground - 2500'
- TNR-4 SFC - by Notam
- TNR-20 ground - 2500'
- Fly-by on demand reporting
- Fly over on demand reporting